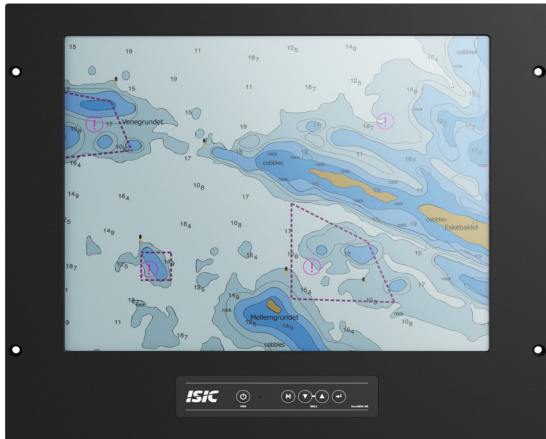


DuraMON 15" C-Line

Monitor for Marine applications



DuraMON 15" C-Line monitorは、ハードウェアに対して信頼性と耐久性が求められる、船舶・海軍等の用途用にデザインされました。

C-Lineプロダクトファミリーは、製品投入後の長い実績があり、調光キーを備え、前面から取付可能な構造です。

✓ 60945 Type Approval

Mechanical outline

DuraMON 15" C-Line

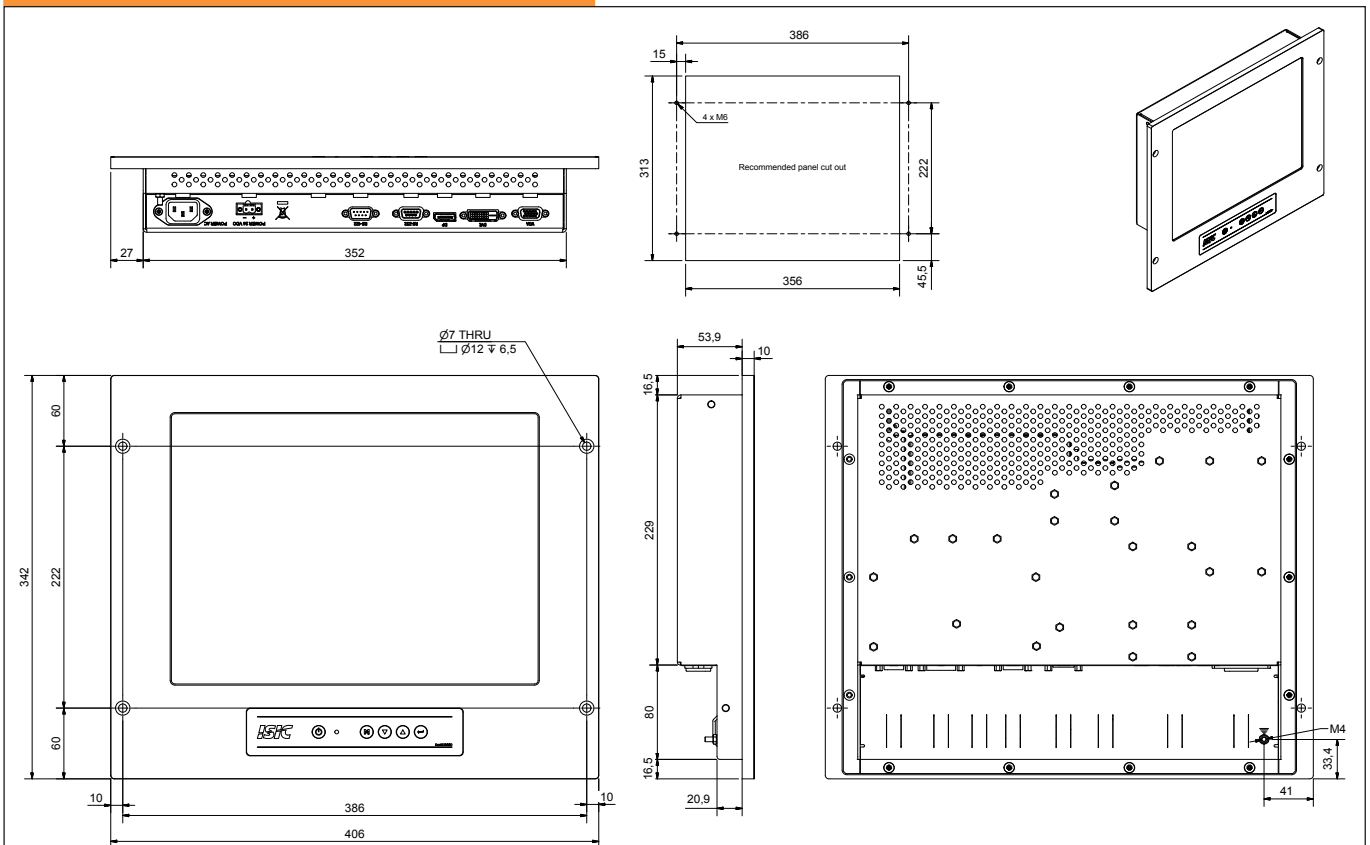


Table and wall brackets - PN 05869-000 & 05876-000

Specifications DuraMON 15" C-Line

Display properties

Size	15.0"
Aspect ratio	4:3
Active area	304.0 x 228.0 mm
Luminance	350 Cd/m2
Contrast	1000:1
Native resolution	1024 x 768
View angle	85° (L/R/T/B) typical
Glass	Anti reflection coated front glass

Input/output terminals

VGA video input	1 x 15p D-sub female
DVI-D video input	1 x DVI-D Dual link connector female
DP video input	1 x DP 1.2 connector female
Serial RS232	1 x 9p D-sub female - remote control
Serial RS422/485	1 x 9p D-sub female - optional
USB	1 x USB 2.0 for touch sensor, optional
Audio Buzzer	None

Operator interface front panel

Power	Power on/off (press for 5 sec. to turn off)
Menu	Get OSD menu
Up	Navigate menu / adjust backlight up
Down	Navigate menu / adjust backlight down
Enter	Navigate menu / enter set value

Power supply / power consumption

AC power	90 - 264 VAC 50 - 60Hz
DC power	18 - 36 VDC, optional
AC/DC dual power	90 - 264 VAC & 18 - 36 VDC, optional
Typ. Consumption	18 W
Max. Consumption	30 W

Physical dimensions

Dimensions	406 (W) x 342 (H) x 64 (D) mm
Dimensions in box	480 (W) x 410 (H) x 170 (D) mm
Weight	4.1 kg
Weight in box	6.5 kg

Environmental

Operating temp.	- 15 to 55° C
Storage temp.	- 25 to 70° C
Humidity	8 to 95% relative humidity
Protection	IP65 from front - IP20 from rear
Materials encl.	Seawater resistant aluminum
Surface treatment	Black Powder coating RAL 9005

Options & accessories

Touch	Resistiv, not included in DNV certificat
ECDIS	Not available
USB	1 x USB 2.0 for touch sensor
RS 422/485	Optional extra COM port
Wall bracket	Wall mount bracket (05876-000)
Table bracket	Table/ceiling mount bracket (05869-000)

Approvals & Certificates

CE mark	EN 61000-6-2 & EN 61000-6-4
Marine	IACS E10 rev. 8 & IEC 60945 ed. 4
Type approval	DNV Mutual Recognition
Compass SD	165 cm (stand.) 110 cm (steer.)

Basic Japan Co.ltd. 2-42-26-S110 Amanuma, Suginami-ku
Tokyo, Japan, 167-0032
Phone: (+ 81) 3 5335 7651
mail@basicjp.com | <https://www.basicjp.com/>

ISIC A/S | Edwin Rahrs Vej 54 | 8220 Brabrand | Denmark
Phone: (+ 45) 70 20 70 77
isic@isic-systems.com | www.isic-systems.com

BASIC JAPAN

ISIC TRUSTED HARDWARE SYSTEMS